



## Evaluation Report CCMC 14038-R MEGCRETE™ MgO Board using MBP-IP Technology

<b>MasterFormat:</b>	06 16 73.00
<b>Evaluation issued:</b>	2016-06-20
<b>Revised:</b>	2017-03-14
<b>Re-evaluation due:</b>	2019-06-20

### 1. Opinion

It is the opinion of the Canadian Construction Materials Centre (CCMC) that the “MEGCRETE™ MgO Board using MBP-IP Technology”, when used as a non-structural exterior wall sheathing in accordance with the conditions and limitations stated in Section 3 of this Report, complies with the National Building Code (NBC) of Canada 2015\*:

- Clause 1.2.1.1.(1)(b), Division A, as an alternative solution that achieves at least the minimum level of performance required by Division B in the areas defined by the objectives and functional statements attributed to the following applicable acceptable solutions:
  - Article 9.23.17.2(1), Thickness, Rating and Material Standards
  - Table 9.23.17.2.-A., Wall Sheathing Thickness and Specifications (gypsum sheathing)

This opinion is based on CCMC’s evaluation of the technical evidence in Section 4 provided by the Report Holder.

\*These provisions in the NBC 2010 and the NBC 2015 have not changed.

### 2. Description

This Report addresses the performance of Rethinking Construction proprietary “MEGCRETE™ MgO Board using MBP-IP Technology” as a suitable non-structural exterior sheathing as an alternative solution to exterior gypsum sheathing. As both these exterior sheathings are non-structural and not qualified to provide bracing of exterior walls, the interior gypsum is designated as the bracing to resist lateral loads with the associated provisions in SubClause 9.23.13.1.(2)(a)(iii) of the NBC 2015.

The product is an innovative magnesium oxychloride (MgOCl)-based panel with a proprietary formulation. The panels are available in a standard 1.2 m × 2.4 m (4 ft. × 8 ft.) size and with thicknesses ranging from 10 mm to 25 mm. The 12-mm-thick sheathing was tested.

Due to the free chloride ions within the panel matrix, which may cause premature corrosion of fasteners, the panel shall be attached with stainless steel fasteners to the lumber stud framing, either Type SS304, SS305 or SS316. The fasteners may be staples or screws ( i.e. self-tapping or non-self-tapping if panel is pre-drilled). For staples they shall be 16-gauge SS316 staples are 11 mm wide × 38 mm in length. In addition, any subsequent fasteners that may penetrate the exterior sheathing (i.e. cladding fasteners) shall also be either SS304, SS305 or SS316 grade stainless steel.

It should be noted that Rethinking Construction produces prefabricated wall panels of conventional woodframe construction containing the “MEGCRETE™ MgO Board using MBP-IP Technology” panels and ensure that proper corrosion resistant fasteners are used. In other installations of their MgO panels, Rethinking Construction provides field supervision of their panel installation. Subsequently installed fasteners through the MgO panel into studs, installed by others, shall also meet the fastener specification herein.

Figure 1 shows a typical non-structural exterior sheathing application.

Figure 2 shows a possible non-structural interior sheathing application.

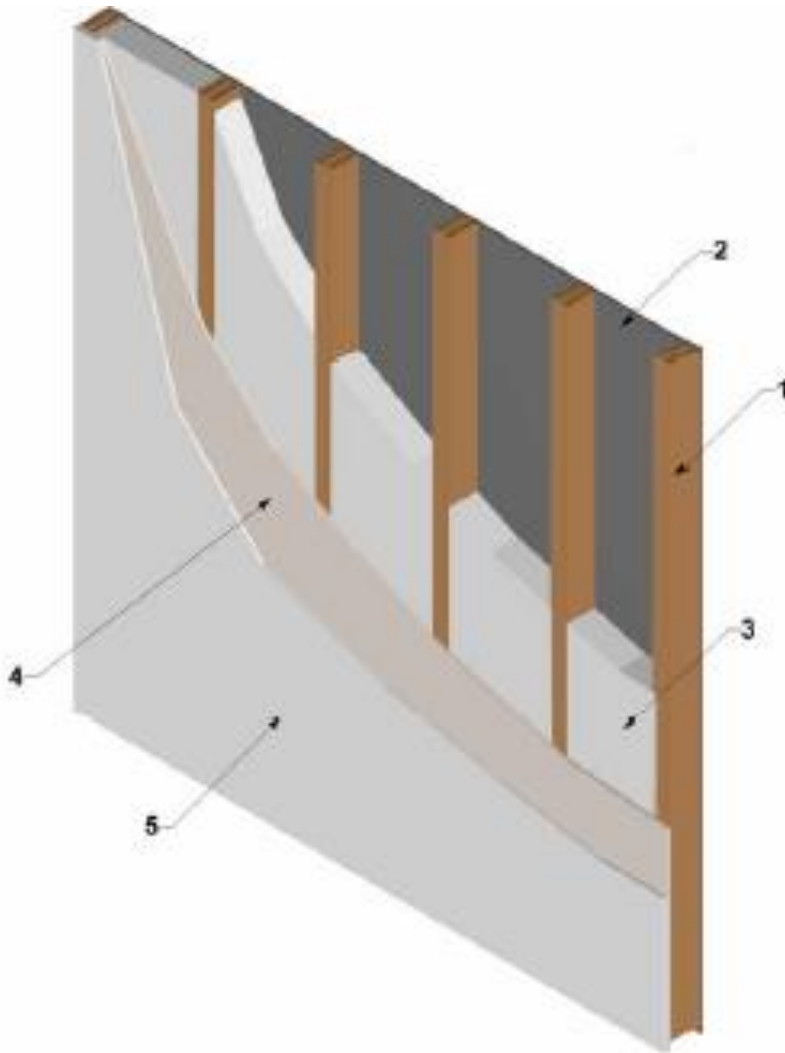
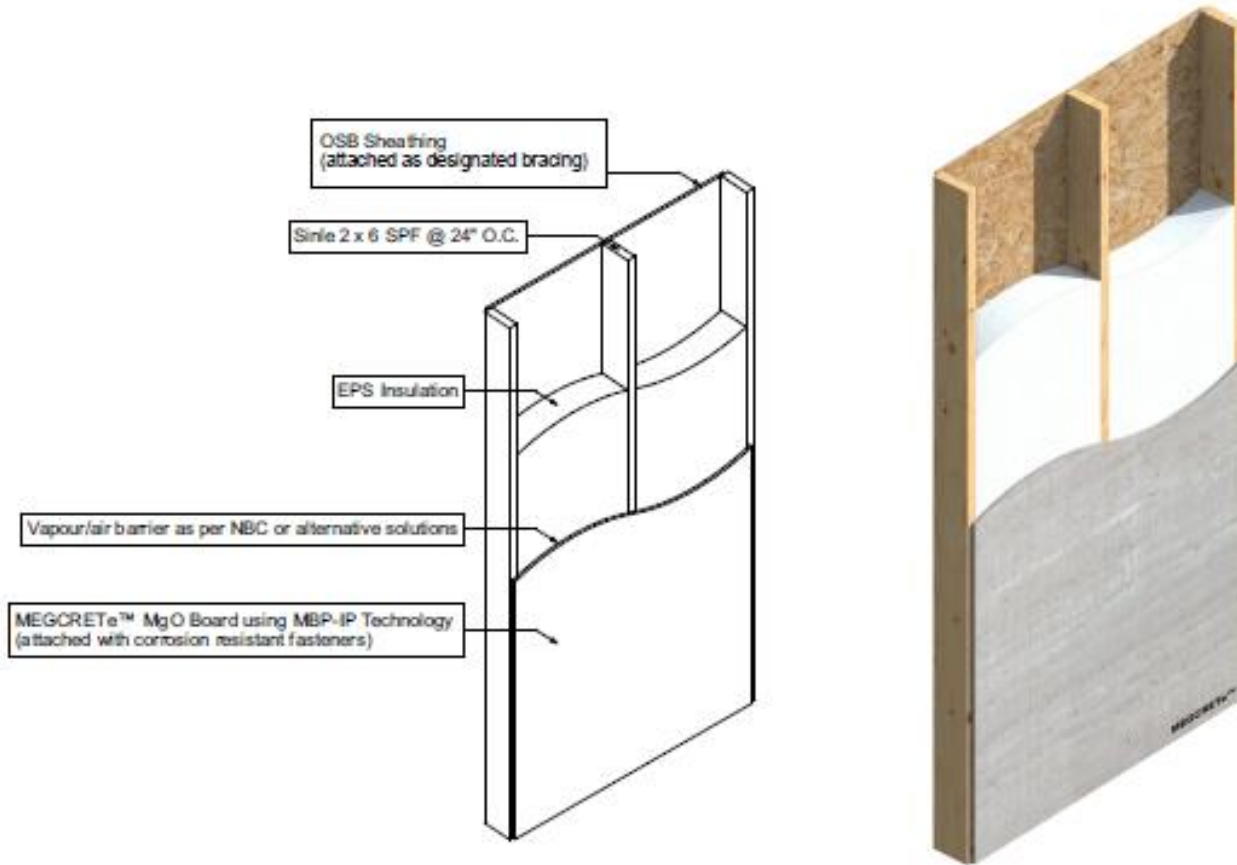


Figure 1. “MEGRETE™ MgO Board using MBP-IP Technology” exterior sheathing on conventional wood frame wall.

1. lumber studs
2. “MEGRETE™ MgO Board using MBP-IP Technology” (attached with corrosion resistant fasteners)
3. insulation
4. vapour/air barrier as per NBC or alternative solutions
5. interior gypsum board(attached as designated bracing)

**Notes:**

- a. Not shown are the required sheathing membrane and cladding as per NBC, attached with corrosion fasteners specified herein.



**Figure 2. “MEGCRETe™ MgO Board using MBP-IP Technology” interior sheathing<sup>2</sup> on conventional wood frame wall.**

**Notes:**

**a** Not shown are the required air/vapour barrier as per 2015 NBC or alternative solutions

2. Note. The “MEGCRETe™ MgO Board using MBP-IP Technology” panel was primarily evaluated as an exterior sheathing where the required bracing is being provided by the interior gypsum. The “MEGCRETe™ MgO Board using MBP-IP Technology” panel may be installed as the interior sheathing where the required bracing is being provided by the exterior woodbased sheathing as part of a conventional wood-frame assembly. The evaluation as exterior sheathing included the durability resistance required to survive the exterior elements (wetting, drying, etc.), thus the durability for interior use is covered. However, other aspects that may be important to the user as an interior finish (joint taping/compounding, paintability) has not been evaluated.

**3. Conditions and Limitations**

CCMC’s compliance opinion in Section 1 is bound by the “MEGCRETe™ MgO Board using MBP-IP Technology” being used in accordance with the conditions and limitations set out below:

- The bracing for the exterior wall assembly shall be the interior gypsum board as this product has not been evaluated for structural use in providing the designated bracing.
- Therefore, the installations are limited to locations where the interior gypsum is the designated bracing, as per SubClause 9.23.13.1.(2)(a)(iii) in the NBC 2015, which is limited to geographical areas where the seismic spectral response acceleration  $S_a(0.2)$  is  $< 0.70$  and the 1-in-50 hourly wind pressure is  $< 0.80$  kPa.
- The interior gypsum must be installed with fastener spacing as per Sentences 9.29.5.8.(3), or 9.29.5.8.(4) in the NBC 2015.
- The fasteners for attachment of the product as an exterior sheathing must be Type SS304, SS305 or SS316 (i.e. self-tapping screws) and was shown to accept 16-gauge Type SS304, SS305 or SS316 staples, 11 mm wide  $\times$  38 mm in length.
- Any fasteners that may penetrate the exterior sheathing product for attachment to the studs (i.e., cladding fasteners) must be Type SS304, SS305 or SS316 stainless steel grade (i.e., self-tapping screws).
- This current evaluation for exterior sheathing is limited to installation on woodframe at this time.
- The sheathing membrane protection and cladding must be as per NBC 2015 provisions.

- As with exterior gypsum board during construction, the product must be protected from excessive rain/moisture exposure during construction.
- The product must be clearly identified with the phrase “CCMC 14038-R.”

## 4. Technical Evidence

The CCMC Technical Guide for “MEGCRETE™ MgO Board using MBP-IP Technology” sets out the technical evidence required by CCMC to evaluate the product as an alternative solution in compliance with the NBC 2010/2015. The Report Holder has submitted test results and other data for the CCMC evaluation. Testing was conducted at an independent laboratory recognized by CCMC. The corresponding test results for “MEGCRETE™ MgO Board using MBP-IP Technology” are summarized below.

### 4.1 Performance Requirements

**Table 4.1.1 Results of Testing the Performance Requirements of the Product**

Property	Unit	Requirement	Result	
Material variability	flexural strength	F-statistic	10 boards from each of 4 production batches	Pass
	density	F-statistic	10 boards from each of 4 production batches	Pass
	chemistry	N/A	X-ray diffraction	Pass
		atomic %	X-ray fluorescence	Pass
Leachate pH	pH	pH > Gypsum board or 6, whichever is greater	8-9 pH	
Free chloride ion leachate (weight of board mass)	%	If > 0.1%, corrosion resistant fasteners required	7	
Vicker’s hardness	MPa	ASTM E 384 report value	Varies 40-150	
Fastening – staples (16-gauge SS316 staples, 11 mm wide × 38 mm in length)	–	Install panels on a 12 ft. × 8 ft. wood frame and observe if breakage after 95% are installed	Pass	
Flexural strength of immersed samples	MPa	Average residual strength after immersion from each lot ≥ 90% of average strength of as-received material. The residual strength after immersion of each specimen must be ≥ 80% of average strength of as-received material. ASTM 293	Pass	
Flexural strength of samples exposed to construction moisture (i.e., rain)	MPa	Average loss in strength of all MgOCl samples ≤ Average loss in strength of NBC benchmark (i.e. exterior gypsum)	Pass <sup>1</sup>	
Water vapour permeance	ng/Pa·s·m <sup>2</sup>	ASTM E 96, desiccant method >170 ng/Pa·s·m <sup>2</sup>	300	
Air permeance	L/s·m <sup>2</sup> ·Pa @ 75 Pa ΔP	Report Value (ULC S741-08)	0.0422	
Fastener corrosion (mass loss compared to SS316)	%	Mass loss of SS316 did not exceed 0.07%, Mass loss of SS304 did not exceed 0.11% ASTM G 198-11	Pass With only 0.04% difference following 4-month test program <sup>2</sup>	

**Note to Table 4.1.1:**

1. The minimum performing NBC Acceptable Solution for non-structural exterior sheathing application was exterior gypsum board. Thus exterior gypsum board was used as the performance benchmark.
2. The corrosion resistance of other stainless steel grades (i.e., SS304, SS305) has been evaluated as acceptable compared to the SS316 marine grade stainless steel.

## Report Holder

Rethinking Construction Ltd.  
Box 369  
Kindersley, SK S0L 1S0

**Telephone:** 403-831-4169

**Fax:** 403-648-8928

**Email:** [info@megcrete.com](mailto:info@megcrete.com)

**Web:** [www.buildingbetter.com](http://www.buildingbetter.com)

## Plant:

Circular Economy Industrial Park,  
Shijiao Town, Qing City District, Qingyuan City, China

## Disclaimer

*This Report is issued by the Canadian Construction Materials Centre, a program of NRC Construction at the National Research Council of Canada. The Report must be read in the context of the entire CCMC Registry of Product Evaluations, including, without limitation, the introduction therein which sets out important information concerning the interpretation and use of CCMC Evaluation Reports.*

*Readers must confirm that the Report is current and has not been withdrawn or superseded by a later issue. Please refer to [http://www.nrc-cnrc.gc.ca/eng/solutions/advisory/ccmc\\_index.html](http://www.nrc-cnrc.gc.ca/eng/solutions/advisory/ccmc_index.html), or contact the Canadian Construction Materials Centre, NRC Construction, National Research Council of Canada, 1200 Montreal Road, Ottawa, Ontario, K1A 0R6. Telephone (613) 993-6189. Fax (613) 952-0268.*

*NRC has evaluated the material, product, system or service described herein only for those characteristics stated herein. The information and opinions in this Report are directed to those who have the appropriate degree of experience to use and apply its contents. This Report is provided without representation, warranty, or guarantee of any kind, expressed, or implied, and the National Research Council of Canada (NRC) provides no endorsement for any evaluated material, product, system or service described herein. NRC accepts no responsibility whatsoever arising in any way from any and all use and reliance on the information contained in this Report. NRC is not undertaking to render professional or other services on behalf of any person or entity nor to perform any duty owed by any person or entity to another person or entity.*

**Date modified:**

2017-04-20